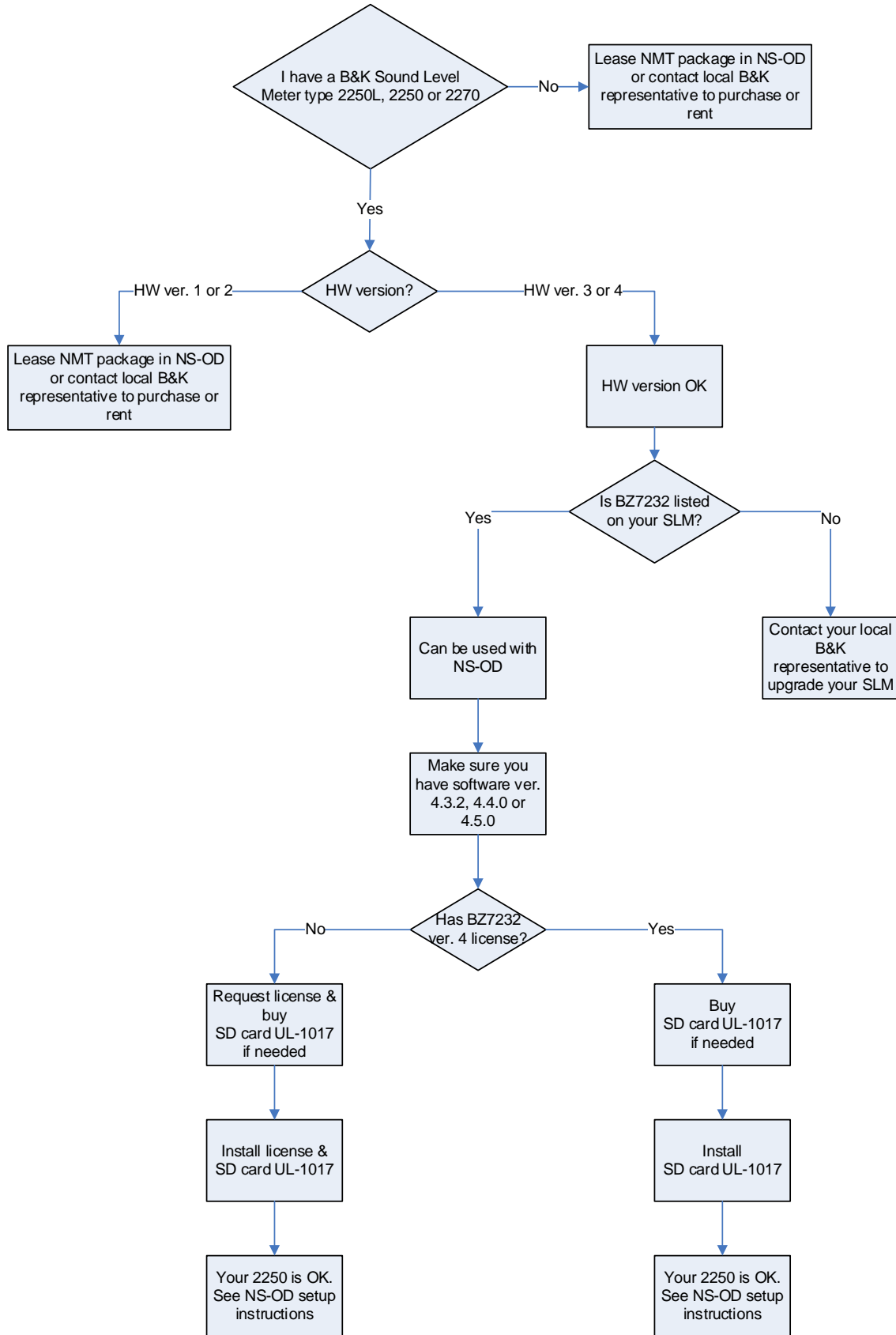


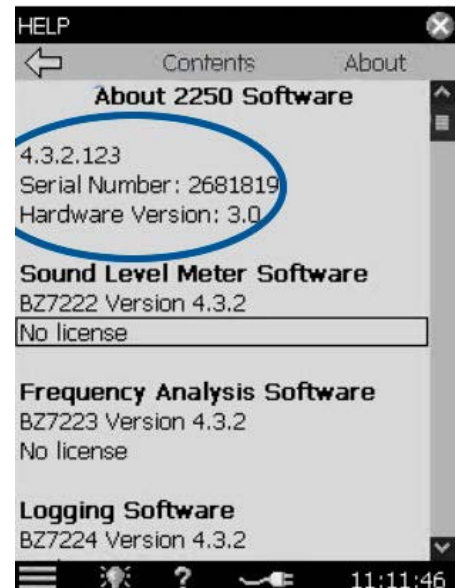
CHECK AND PREPARE MY SOUND LEVEL METER FOR USE WITH NOISE SENTINEL – ON DEMAND

Please follow the flow chart in order to check and prepare your SLM for use with NS-OD. Detailed description of the individual steps are found in the following sections.



Checking Hardware version:

On your Sound Level Meter display press “?” and “About”

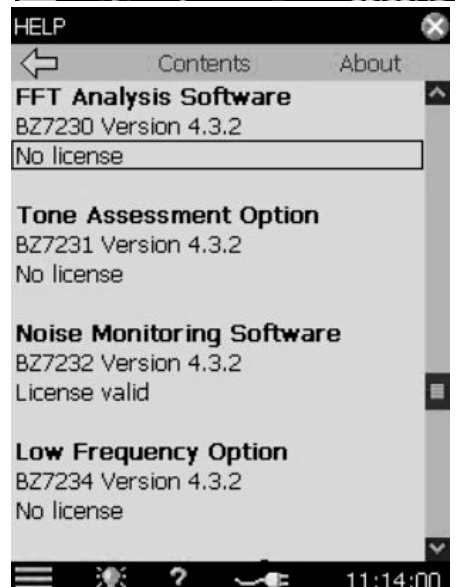


Checking BZ7232 Software existence, version and license:

On Sound Level Meter display press “?” and “About”

Scroll down to Noise Monitoring Software:

If Noise Monitoring is not on the list, your Sound Level Meter does not support NMT usage.



How to update Sound Level Meter Software:

The software on your SLM can be upgraded using Measurement Partner Suite – BZ5503 which can be downloaded from www.bksv.com. Instructions on how to upgrade your SLM software using Measurement Partner Suite can be found here: <http://www.youtube.com/watch?v=JR5fcRbFS5s>

How to request and install license:

Open Noise Sentinel – On Demand and open the Subscription page. Press the Own Equipment button to open the Own Equipment dialog. On that page you will find a feature to request a license.

Once you receive the license, you will need Measurement Partner Suite – BZ5503 to install it. It can be downloaded from www.bksv.com. Instructions on how to install it using Measurement Partner Suite can be found here:

<https://www.youtube.com/watch?v=qv91nITQwLA>

How to select the Noise Monitoring template

On 2250L:

Point and click the name of the currently active template to open the template selection page.

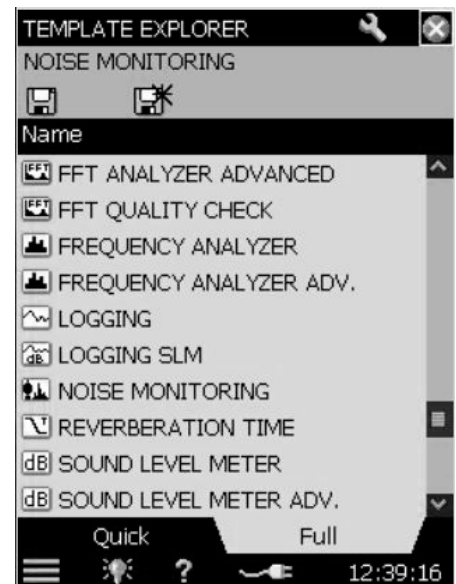
Select Noise Monitoring.

On 2250 & 2270:

Press the Menu button (lower left corner of the screen) Select “Template Explorer”

Select the “Full” tab

Scroll down to the NOISE MONITORING and select that.



How to buy and install SD card:

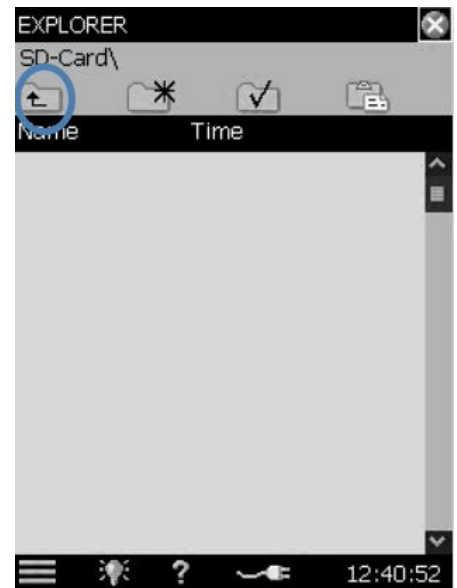
Using your Sound Level Meter with the NMT software requires a specific type of SD card (B&K item number UL-1017, 8GB Innodisk). If you do not have that specific SD card, please contact your local B&K Sales representative: [Contact B&K](#)

When you receive it:

Replace the current SD card with the new one. Or just insert it if you haven't got one installed currently. It might run a Speed Check and ask if you will change default folder. Please accept that. If you have done that, you can skip the next steps and jump to "Check that the SD-Card is active" below, otherwise continue from here:

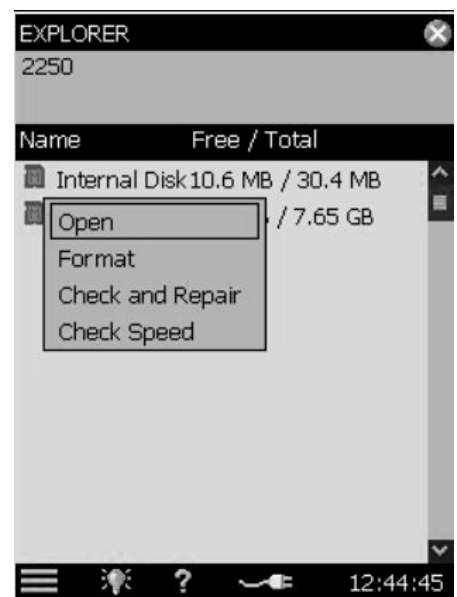
Press the Menu button (lower left corner of the screen) Select "Explorer"

Press the "Folder Up" button to see the SD-Card listed

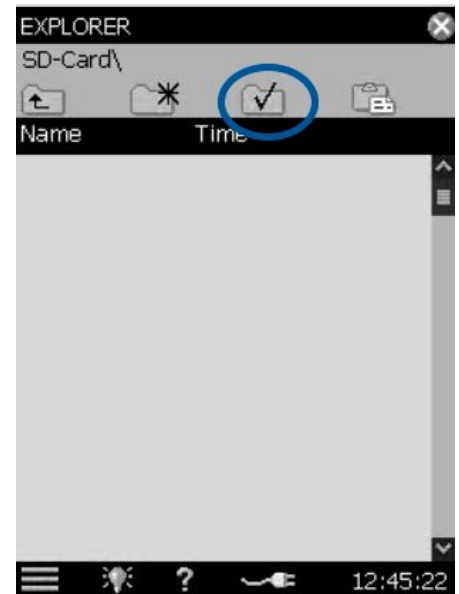


Press the SD-Card entry and select Format

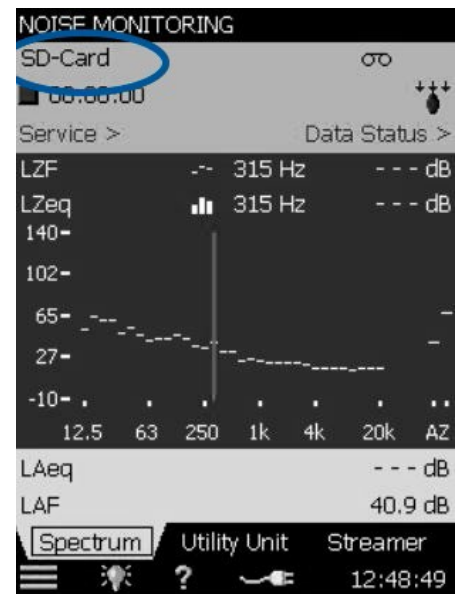
When format is complete, press the SD-Card entry again and select Open



Press the “Select folder” button and close the Explorer window



Check that the SD-Card is active and you are done.
 (If using another software, the project with a * will appear)



How to setup your Sound Level Meter to communicate with the internet:

If you have a HW version 3 Sound Level Meter you will need the LAN adapter B&K Type UL-1016. If you do not have that, please contact your local B&K Sales representative: [Contact B&K](#)

Connect your Sound Level Meter to an internet connection either via available LAN connection or by connecting to a wireless 3G or 4G router. For the latter we recommend the Sierra Wireless GX400 series. Instructions on setting up the GX400 can be found here: [GX400 Setup](#)

A 3GB data per month plan will typically cover full time usage.

Once connected, press the Menu button (lower left corner of the screen)

Select "Preferences"

Open "Network Settings"

Set IP Address: Automatically

When the fields "IP Address", "Subnet Mask", "Default Gateway" and the two DNS entries are populated with meaningful addresses (not 0.0.0.0) it is an indication you SLM has network connection

How to setup your Sound Level Meter for NS-OD usage:

Press the Menu button (lower left corner of the screen) Select "Preferences"

Open the "NMT Server Settings" section and fill out the settings:

Server Address	streamer.noisesentinel.com
Server Port	80
Instance Name	streamer
Auto Connect	Yes
Retention	30d
Use WebSocket	Yes

Close the Preferences window and select the streamer tab:

Response OK/ indicates successful connection to Noise Sentinel

You can now register your 2250 for use with NSOD and, if you are approved for use, book projects.

